

## Portable Desiccant Dryers

CPD 850, CPD 1200, CPD 1700  
For rental, chemical, oil & gas,  
and mining applications.





People. Passion. Performance.


 Chicago  
Pneumatic


# Your committed partner to get the job done




  
**OPTIMIZED FOR HIGH PERFORMANCE**

  
**MINIMIZED OPERATIONAL COSTS**

  
**SIMPLE TO INSTALL AND MAINTAIN**

  
**INCREASED RELIABILITY**

  
**LOW MAINTENANCE LEVEL**



## CPD Series: The smart choice for high reliability

Our CPD desiccant dryers are your go-to for on-site dry air needs. Engineered to tackle all conditions—be it high temperatures, dust, or humidity—our dryers deliver reliable performance wherever you need it.

### Reliable, easy-to-use solutions for your business

Are you looking for a steady, reliable supply of dry air for your applications? Chicago Pneumatic's portable desiccant dryers are your solution! Shield your compressed air system from moisture and corrosion with our dryers, ensuring smooth operation. Built for all conditions, these user-friendly dryers provide dry air with ease.

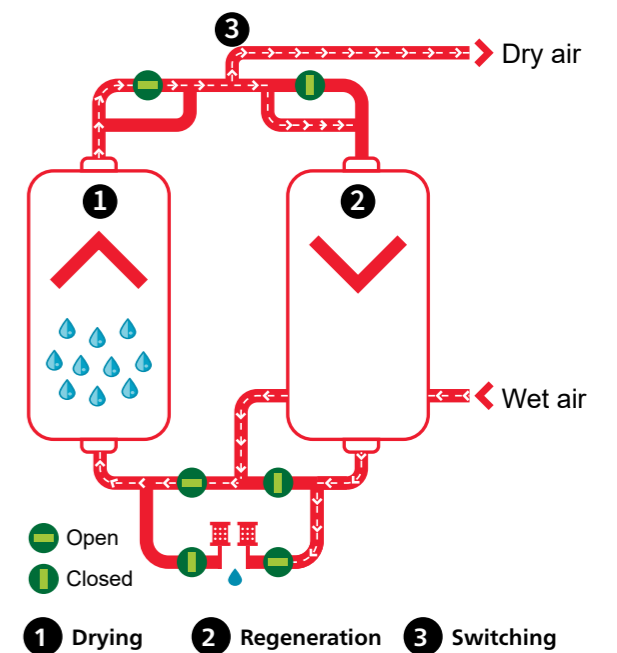
And how about ease of operation? Our dryers are compact, mobile, and easy to start up, they save your time and effort. Plus, they require minimal maintenance, protecting your equipment and reducing costs.

### Why is air treatment needed?

Moisture is the unseen enemy of any compressed air system. Without proper air treatment, it can lead to corrosion, equipment failure, and expensive downtime. That's where our air dryers step in. They eliminate excess moisture, ensuring top-notch air quality. Dry air is vital for maintaining efficiency, preventing product defects, and safeguarding your equipment. Simply put, air treatment is key to smooth, reliable operations.

### How desiccant dryers work?

Desiccant dryers use two towers filled with a desiccant material that adsorbs moisture from the air. As compressed air passes through one tower, the desiccant removes moisture. Once the desiccant's drying capacity is used up, it must be regenerated. This is achieved with a twin-tower design, where one tower dries the air while the other regenerates.



# CPD

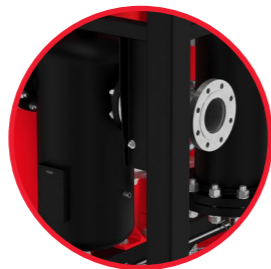
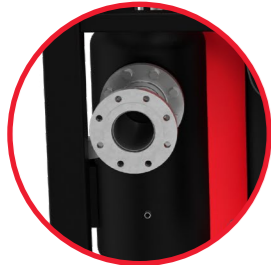
## 01 High desiccant quality

- Achieve a standard of dew point of  $-40^{\circ}\text{C}/-40^{\circ}\text{F}$ .
- Up to 20% extra desiccant ensures consistent performance in harsh conditions.
- Wide vessels ensure low air speed, longer contact time, and extended lifespan.



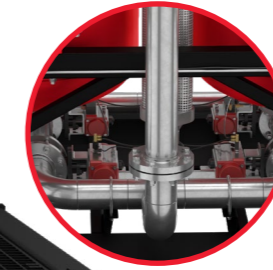
## 02 User-friendly design

- **Plug & play simplicity:** 100% pneumatic controls mean no external power requirements - just set up and go.
- **Flexible installation:** Stackable crash frame saves valuable storage space
  - Plug-in & out design minimizes on-site installation time
- **Built-in protection:** Sonic nozzle limits air speed, preventing desiccant damage during startup



## 03 Comprehensive filtration system

- **Complete contaminant removal:** Water separator eliminates liquid water before entering drying towers
  - Top-quality oil-coalescing filter blocks oil particles and dust
  - Outlet air filter provides final protection against desiccant particles

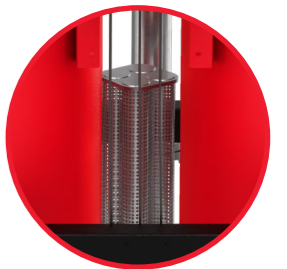


## 04 Durable stainless-steel valves

- High-performance butterfly valves ensure long-lasting, reliable operation

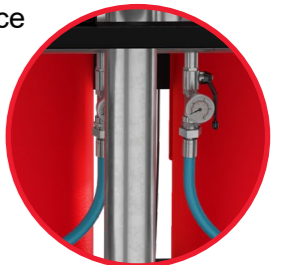
## 05 Advanced silencers

- Prevent back-pressure, enhance purge efficiency, and reduce noise levels



## 06 Optimized galvanized piping

- Flanged design simplifies maintenance
- Minimizes leak risks
- Ensures low pressure drop for maximum energy savings



## 07 Small footprint, big impact

- **Heavy-duty frame:**
  - Lifting lugs and forklift slots on all sides
  - Low center of gravity for enhanced stability
- **Weather-resistant finish:** High-quality paint protects against extreme environmental conditions
- **Compact design:** Optimized dimensions fit standard transport, reducing your logistics costs



## Industries & applications

Model	Rental	Construction		Chemical		
		Pneumatic tools	Sandblasting	Process air	Instrumentation	Material handling
CPD 850	●	●	●	●	○	○
CPD 1200	●	●	●	●	●	●
CPD 1700	●	●	●	●	●	●

Model	Oil and Gas			Mining		
	Pneumatic tools/ Instruments	Offshore applications	Pipeline maintenance	Pneumatic tools	Exploration drilling	Back-up power
CPD 850	●	○	●	●	●	●
CPD 1200	●	●	●	●	●	●
CPD 1700	●	●	●	●	●	●

● Best choice ○ Suitable



## Technical specifications

Models		CPD 850	CPD 1200	CPD 1700
<b>Limitations</b>	Unit			
Maximum air inlet temperature	bar(g)	7	7	7
	psi(g)	100	100	100
Maximum inlet pressure	bar(g)	15.5	15.5	15.5
	psi(g)	225	225	225
Minimum air inlet temperature	°C	1	1	1
	°F	34	34	34
Maximum air inlet temperature	°C	50	50	50
	°F	120	120	120
Minimum ambient temperature	°C	1	1	1
	°F	34	34	34
Pressure dew point	°C	-40	-40	-40
	°F			
<b>Connections</b>		DN 80 ASME	DN80 ASME	DN100 ASME
Inlet water separator		Yes	Yes	Yes
Inlet filter		UD 850	UD 1200	UD 1700
Outlet filter		DDp 1200	DDp 1200	DDp 1700
Desiccant type		Activated Alumina		
<b>Volume flow at dryer inlet (*)</b>				
7 bar / 100 psi(g)	cfm	880	1200	1700
10 bar/145 psi(g)	cfm	1060	1440	2040
12 bar / 175 psi(g)	cfm	1290	1752	2482
14 bar / 200 psi(g)	cfm	1430	1944	2754
(*) At standard working conditions: 35°C/95°F compressed air inlet temperature, 100% relative humidity				
<b>Dimensions</b>				
Length	mm	2192	2192	2358
Width	mm	1300	1400	1712
Height	mm	2280	2280	2280
Weight	kg	2300	2550	3500
Length	in	86.3	86.3	92.8
Width	in	51.2	55.1	67.4
Height	in	89.8	89.8	89.8
Weight	lbs	5071	5622	7716

# Portable air solutions portfolio

## Portable air compressors



### Small air range

- 2 - 5,3 m<sup>3</sup>/min
- 7 - 12 bar



### Medium air range

- 5,3 - 24,2 m<sup>3</sup>/min
- 7 - 17 bar



### Large air range

- 21,7 - 40,6 m<sup>3</sup>/min
- 10,3 - 29 bar

## Handheld tools



### Pneumatic tools

- Breakers (13.5-43.5 kg)
- Hammers (4.3-15.4 kg)
- Rock drills (14.7-29.5 kg)
- Additional air tools



### Hydraulic tools

- Hammers and breakers (12-39 kg)
- Power packs
- Additional hydraulic tools



### Petrol driven tools

- Breakers (22.5 kg)
- Motor drills (25 kg)
- Tie tampers (22.5 kg)

## Portable air compressors electric driven



### Electric compressors

- 7 - 13 m<sup>3</sup>/min
- 8.5 - 13.5 bar

## Parts and services



- Service maintenance
- Service contracts
- Digitalization
- Preventive maintenance

## Desiccant air dryer



- Up to 1200 l/s at 14 bar
- 7-15.5 bar (100-225 psi)

For more information, please contact your CP partner:

Use only authorized parts. Any damage or malfunction caused by the use of unauthorized parts is not covered by Warranty or Product Liability.